



WELCOME TO SI LING PRIMARY SCHOOL



Every Si Ling Pupil a Scholar who Leads and Serves





Programme Outline

Time	Programme
10.00 a.m.	Welcome
10.05 a.m.	Principal's Address
10.15 a.m.	Briefing on Admin Matters by YH
10.50 a.m.	Q&A Session
11.00 a.m.	Proceed to Classrooms
11.30 a.m.	End of Programme

Every Si Ling Pupil a Scholar who Leads and Serves



SCHOOL LEADERS

Every Si Ling Pupil a Scholar who Leads and Serves



Principal
MR KOE EE TIONG

Every Si Ling Pupil a Scholar who Leads and Serves



Vice Principal (Academic) **MDM NURAZIAN BAJURI**

Every Si Ling Pupil a Scholar who Leads and Serves



Vice Principal (Academic)
MR RAJ KUMAR

Every Si Ling Pupil a Scholar who Leads and Serves



INCOMING VICE-PRINCIPAL

MS JASMINE LIM

Every Si Ling Pupil a Scholar who Leads and Serves



STAFF JOINING US THIS MORNING

Every Si Ling Pupil a Scholar who Leads and Serves



Year Head (P1 & P2) **MR SETHU RAJAGOPAL**

Every Si Ling Pupil a Scholar who Leads and Serves



Senior Teacher
(Learning Needs)
MDM HAFIZAH MAHMUD

Every Si Ling Pupil a Scholar who Leads and Serves



P1 FORM TEACHERS



MDM HAFIZAH



MDM XU YH



MRS MAY NEO



MS CHONG LC



MDM RUTHRA



MDM NUR ATIQA



MDM KATIJA



MDM FARADILAH

Every Si Ling Pupil a Scholar who Leads and Serves



MDM JOSEPHINE LOH
LEARNING SUPPORT ENGLISH

Every Si Ling Pupil a Scholar who Leads and Serves



MRS JANET TENG



MDM HAZLINE B

LEARNING SUPPORT MATHEMATICS

Every Si Ling Pupil a Scholar who Leads and Serves



MOTHER TONGUE TEACHERS



Ms Chong Leng Cher
Chinese Language
Teacher



Ms Lee Mei Cheng
Chinese Language
Teacher



Mdm Faradilah
Malay Language
Teacher



Mdm Nur Atiqah
Malay Language
Teacher



Mdm S. Jayanthi
Tamil Language
Teacher

Every Si Ling Pupil a Scholar who Leads and Serves



PRINCIPAL'S WELCOME ADDRESS

MR KOE EE TIONG

Every Si Ling Pupil a Scholar who Leads and Serves



Parental Presence is Key

It means that you..

- show interest in what your **child is learning and doing** in school
- **work closely with the teachers** to maximize your child's potential



Parental Presence is Key





Parental Presence is Key

P4 & P6 NAPFA Run



Every Si Ling Pupil a Scholar who Leads and Serves



Parental Presence is Key

Workshops for Parents



Encouraging our P6 students



Every Si Ling Pupil a Scholar who Leads and Serves



Parental Presence is Key

Talks for P1 & P5 Students by Parents



Every Si Ling Pupil a Scholar who



Parental Presence is Key

P1 Parent-child Bonding Sessions



Every Si Ling Pupil a Scholar who Leads and Serves



BRIEFING BY YEAR HEAD

MR SETHU RAJAGOPAL
YEAR HEAD PRIMARY 1 & 2

Every Si Ling Pupil a Scholar who Leads and Serves



Every Si Ling Pupil a Scholar who Leads and Serves



Form classes will be allocated at a later date



Every Si Ling Pupil a Scholar who Leads and Serves



PROGRAMMES SUPPORTING P1 STUDENTS

1. Learning Support Programme – English
2. Learning Support Mathematics
3. TRANSIT

Every Si Ling Pupil a Scholar who Leads and Serves



SCHOOL PROGRAMME FIRST THREE DAYS

2 Jan 2026

5 Jan 2026

6 Jan 2026

Every Si Ling Pupil a Scholar who Leads and Serves



First Day of School (2 Jan 2026)

- Have a good breakfast
- Arrive in school by 7.25 a.m.
- Assemble in the school hall and sit according to the class group label
- Dismissal at 12.00 p.m.

Note: P1 Parents are allowed into the school premises only on the 1st day of school.



First Day of School (2 Jan 2026)

ENGAGEMENT WITH PARENTS

- Principal's Address
- Seminar
- P1 Recess from **9 a.m. to 9.30 a.m.***
- * Only on the 1st day of school
- Treasure Hunt



DAY ONE (2 JAN 2026)

- **Classroom Circle Time**
 - Getting To Know Your Form Teachers and Classmates
- **School Tour**
- **Apple Storytime**



Every Si Ling Pupil a Scholar who Leads and Serves



DAY TWO (5 JAN 2026)

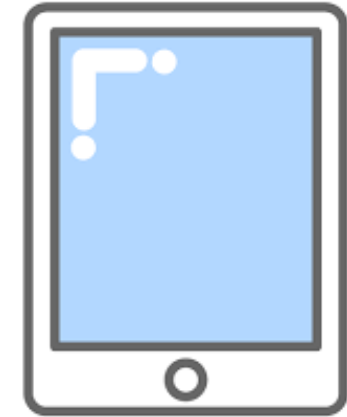
- **Classroom Circle Time**
 - Setting Class Rules
- **Express Yourself!**
 - Puppetry
 - Sing and Dance
- **Buddy Programme**





DAY THREE (6 JAN 2026)

- **Classroom Circle Time**
 - Road Safety
- **Ice Breaker Games**
- **ICT Experience**
- **Buddy Programme**





Preparing for School

What to Wear

1. School uniform
2. Black school shoes
3. White school socks
4. For girls, only black, dark blue or brown hair clips and ribbons are allowed.





Preparing for school

What to Pack Everyday:

1. Pencil case
2. Colour pencils
3. Student Handbook*
4. File for Letters / Homework
5. Water bottle
6. Pocket Money
7. Storybook
8. Snacks



*** Student Handbook will be issued by Week 1**



First 3 Days of School (2, 5 & 6 Jan 2026)

- **Do not bring school bag**
- Bring a small bag for:
 - pencil case
 - colour pencils
 - wallet / food for recess
 - snacks for Snack Time
 - storybook





First Week of School

(Wednesday, 7 Jan 2026 onwards)

- Bring only the stipulated books for each day
- Write the name of your child on all books and materials
- Teachers will collect these materials and place them in the classroom
- Bring a story book for silent reading before flag-raising ceremony



Day 4 of School (Wednesday, 7 Jan 2026)

ENGLISH LANGUAGE

- STELLAR Handwriting Book
- P1 Reading Comprehension Booklet 2
- P1 Language Usage Booklets 1-4
- 1 Broad Line Exercise book (Spelling)
- 1 Jotter book (Writing)
- My Word Bank Book



Day 5 of School (Thursday, 8 Jan 2026)

CHINESE LANGUAGE

- Chinese Language Activity Book 1A
- Chinese Language Writing Book 1A
- 好品德 好公民 — Character and Citizenship Education Textbook & Activity Book 1
- 1 Broad Square Exercise book – Chinese Language
- 字宝宝 Flash Card 1A(Small)

Every Si Ling Pupil a Scholar who Leads and Serves



Day 5 of School (Thursday, 8 Jan 2026)

MALAY LANGUAGE

- MLPS (CEKAP) Buku Aktiviti 1A
- Rakyat Budiman Character and Citizenship Education Activity Book 1
- 1 Jotter book



Day 5 of School (Thursday, 8 Jan 2026)

TAMIL LANGUAGE

- Tamil Language Workbook 1A
- Theen Thamizh Penmanship Book 1A
- **பண்புள்ள குடிமக்கள்** Character and Citizenship Education Activity Book 1
- 1 Broad Line Exercise book

Every Si Ling Pupil a Scholar who Leads and Serves



Day 6 of School (Friday, 9 Jan 2026)

MATHEMATICS

- Primary Mathematics Textbook 1A
- Primary Mathematics Practice Book 1A
- 1 Medium Square Exercise Book
(for Maths Mental Sums)
- 5-part Blue Divider File

Every Si Ling Pupil a Scholar who Leads and Serves



Day 7 of School (Monday, 12 Jan 2026)

OTHER SUBJECTS:

- Inquiring Into Our World Activity Book (Social Studies)
- FTGP Book
- A4 Sketch Book
- Music Book
- Report Book



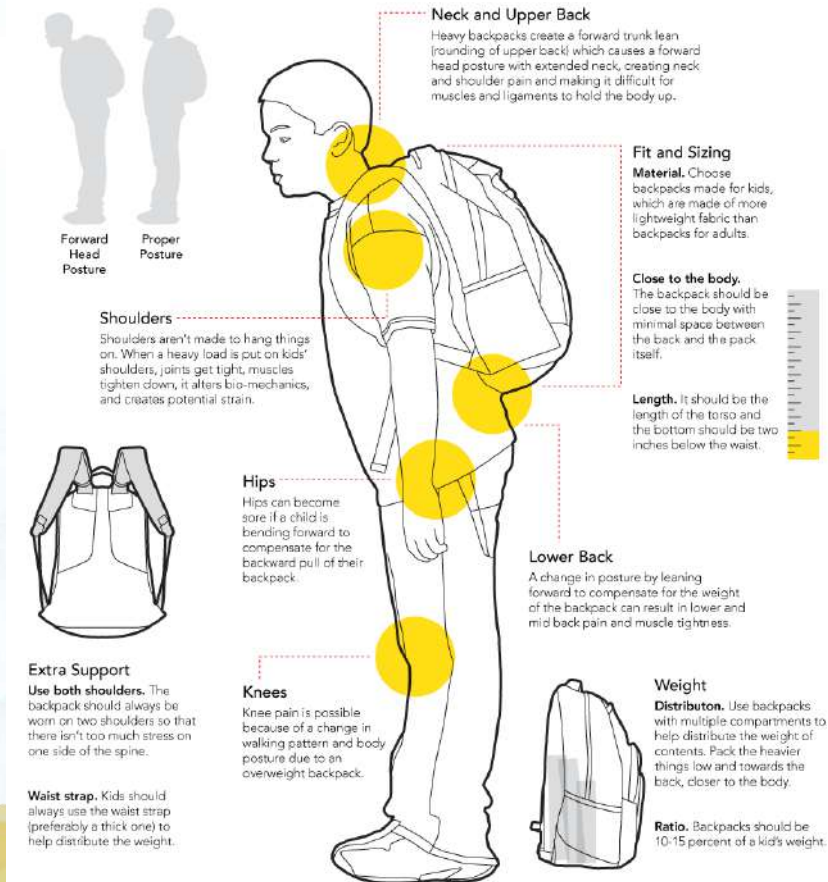
PREPARING FOR SCHOOL

Backpack

- Keep it light
- Critical strain on joints (permanent)
- Regularly pack their bags for the next day

What Heavy Backpacks Are Doing To Kids' Bodies

About 5,000 children visit emergency rooms each year because of backpack-related injuries, and at least 14,000 kids are treated for them. While not every kid will go to the hospital because of heavy backpacks, overweight loads can cause neck, back and shoulder pain and more. Below, see what is so dangerous about kids carrying heavy backpacks — and what parents can do about it.



Sources: Dr. Rob Danoff, an osteopathic family physician, U.S. Consumer Product Safety Commission, American Academy of Orthopaedic Surgeons, Elise G. Hewitt, Board Certified Pediatric Chiropractor

THE HUFFINGTON POST

Every Si Ling Pupil a Scholar who Leads and Serves



School Term

- New school term: Friday, 2 January 2026
- 4 terms in a year: Termly School Calendar will be shared via Parents Gateway
- All students must attend school until the end of each school term.



School Hours

School Days	Reporting Time	Recess Time	Dismissal Time
Mondays to Fridays	7.25 a.m.*	9.00 to 9.30 a.m.	1.30 p.m.

* Students report to Hall (Mon) / Classrooms (Tues-Fri) by 7.25 a.m.

* Silent reading starts from 7.10 a.m.



PUNCTUALITY & ATTENDANCE

Research shows that children with **consistent** school attendance **learn more**. If children are to fully benefit from the many learning opportunities, **regular school attendance is vital**.

A student who is 10 minutes late every day will miss 30 hours of instruction during the year, definitely, a significant loss in the teachable moments that you can't get back.



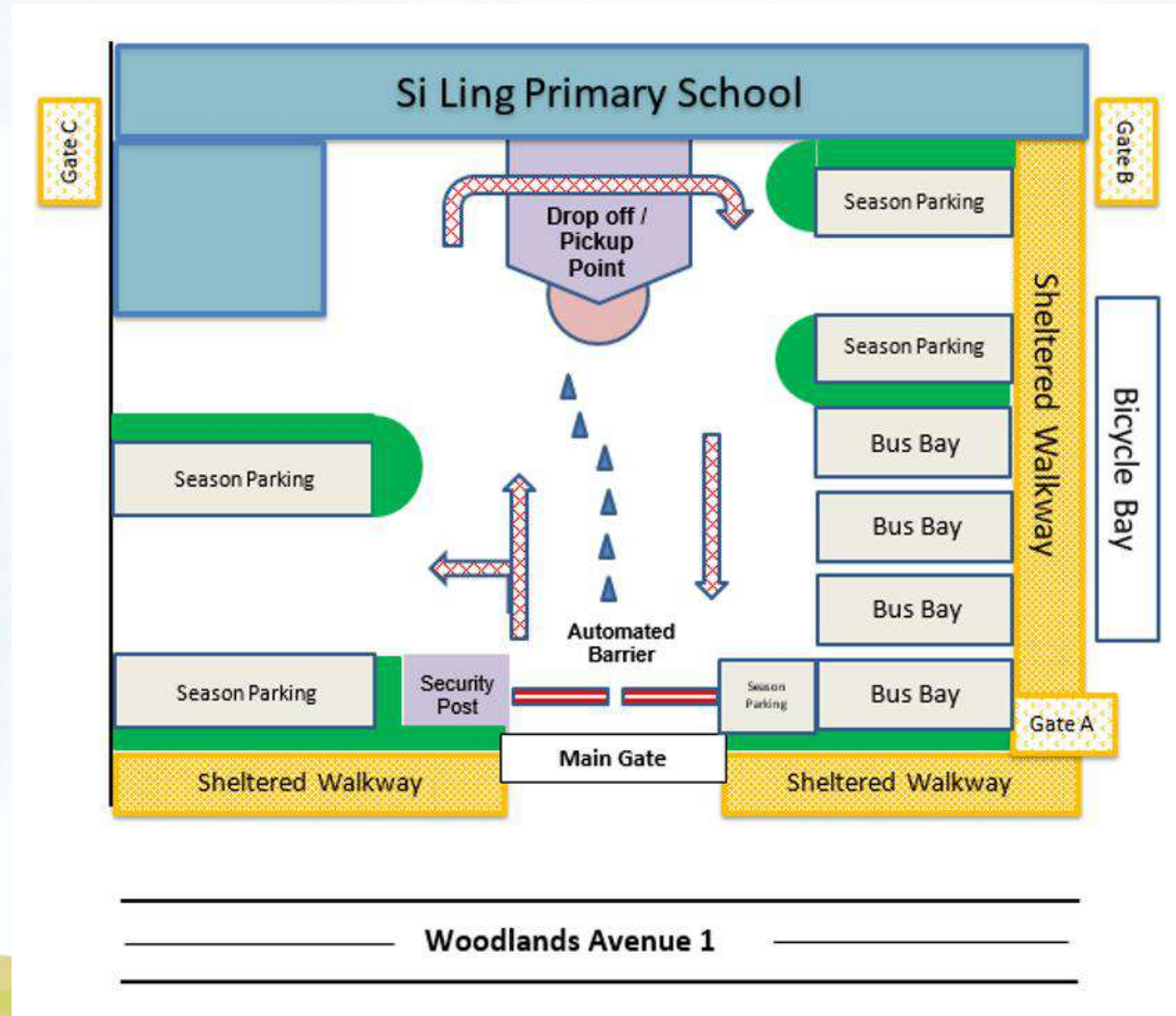
ARRIVAL AND DISMISSAL ARRANGEMENTS



Every Si Ling Pupil a Scholar who Leads and Serves



ARRIVAL ARRANGEMENT



Every Si Ling Pupil a Scholar who Leads and Serves



Main Gate (For Vehicles only)

6.00 a.m. to 6.00 p.m.



Every Si Ling Pupil a Scholar who Leads and Serves



Gate A (Behind Bus Stop)

6.55 a.m. to 7.30 a.m.

1.30 p.m. to 1.40 p.m.

INTERCOM



Every Si Ling Pupil a Scholar who Leads and Serves



Gate B (Blk 371A)

6.55 a.m. to 7.30 a.m.
1.30 p.m. to 1.40 p.m.



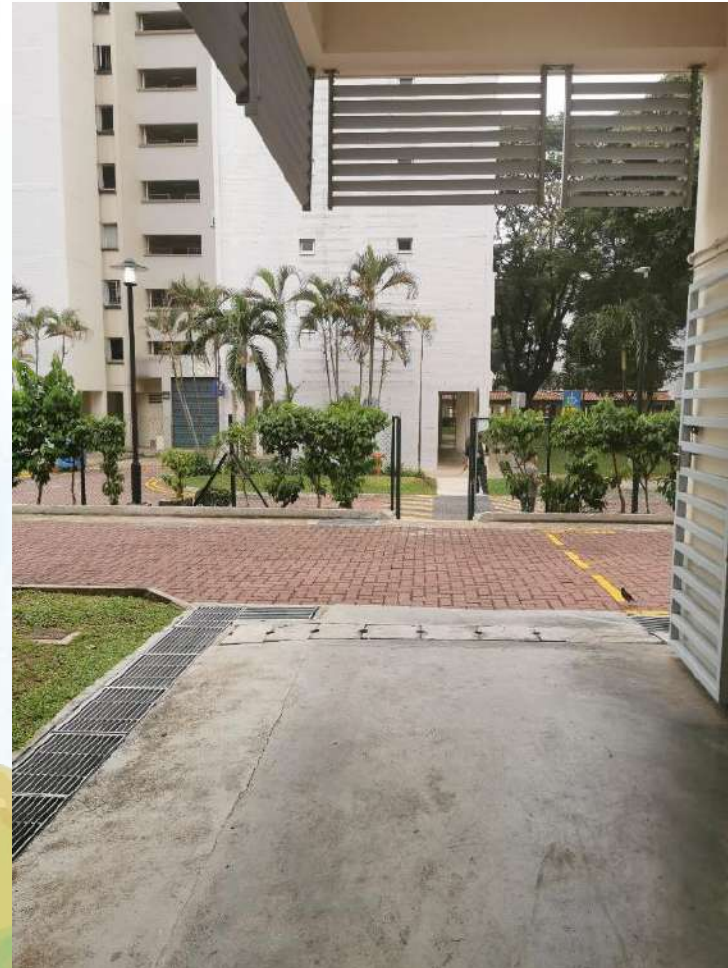
Every Si Ling Pupil a Scholar who Leads and Serves



Gate C (Blk 353)

6.55 a.m. to 7.30 a.m.

1.30 p.m. to 1.40 p.m.



Every Si Ling Pupil a Scholar who Leads and Serves



DISMISSAL ARRANGEMENT

Pick up by family members / caregivers:

- All P1 students will be dismissed class by class.
- Teachers will bring students to Gate A, B and C.
- Parents are to wait outside the gates.

Please make way for the students to be dismissed.



DISMISSAL ARRANGEMENT

School Bus

- Teachers will bring students to the bus queues.
- Students will join the bus queues according to their bus numbers.





SEATBELT RULES

- Ensure the safety of school children.
The safety of children is a **shared responsibility**.
- Children need to cooperate with the school bus drivers.
- **Prepare your child mentally and train your child to belt up for safety at all times.**





DISMISSAL ARRANGEMENT

Meet up with Elder Siblings



- Siblings meet each other at the designated Sibling's Waiting Area near the General Office.
- Siblings will leave the school according to the dismissal mode of the elder sibling.



DISMISSAL ARRANGEMENT

Student Care

- Students will be picked up by the Student Care Teachers within the school compound (either outside the School Hall or near the Bookshop)





BUDDY SYSTEM

- P5 buddies will assist the P1 students on the first week during recess.
- P5 buddies will:
 - guide the P1 students to queue at the food stalls
 - remind P1 students to collect their change
 - teach P1 students to bring their food to the tables safely
 - teach P1 students to return utensils to the receptacles



BUDDY SYSTEM



Every Si Ling Pupil a Scholar who Leads and Serves



SCHOOL CANTEEN

- Pocket money of about **\$2** each day
- **Variety of food items sold:**
 - Chinese food
 - Western food
 - Halal food
 - Fresh fruit juice and cut fruits
 - Hot drinks and snacks





Stall 1

Thirst Quenchers







你们是最棒的

Price List

Good Morning

Chicken rice set
... \$2.30 ...

Egg \$0.50

vege \$0.50

♥ Rice \$0.50 ♥
.... ♥

Every

erves



SNACK BREAK

- 10 mins snack time at 12 p.m.
- Prepare a simple healthy dry snack
eg. bread, fruits, biscuits
- No sweet drinks and unhealthy snacks allowed
- Try out “Snack Time” at home!





GENERAL INFORMATION

Visitors to School

- For the safety and security of our students, all visitors are required to sign into the log book at the guard post before proceeding to the General Office.
- Visitors are required to display “Visitor” pass at all times.
- Visitors are not allowed to loiter in the school or go directly to the classrooms.



GENERAL INFORMATION

- For students who are unwell, parents are required to come to school to bring them home.
- Parents must acknowledge in the 'Permission to Leave School Early Form' in the General Office.
- All parents are required to update the school whenever there is a change in dismissal mode, address or contact numbers.



FINANCIAL ASSISTANCE SCHEME (FAS)

- Available for Singapore Citizens only.
- You may approach the staff at the General Office if you need assistance.
- Forms for MOE FAS can also be obtained from MOE Website.



CHILD CONCESSION CARD



Every Si Ling Pupil a Scholar who Leads and Serves



CHILD CONCESSION CARD

The Child Concession Card is a stored value travel card that enables children to travel for free on public transport, except on Premium Bus Services and NightRider services.

A child is eligible to apply for a Child Concession Card if he/she is 0.9m and above in height, below seven years old.



CHILD CONCESSION CARD

The Child Concession Card can also be used to purchase food and drinks from the canteen however parents need to top-up the card at any SimplyGo Ticket Office before they can use for the purchase.

**** Do note that this card is required for all students under the MOE Financial Assistance Scheme (MOE FAS).**



CHILD CONCESSION CARD

How to Apply

Please apply for the Child Concession Card at any SimplyGo Ticket Office.



The card will be encoded with the child's name, birth certificate/passport number, date of birth and card expiry date.

Each eligible child is entitled to one Child Concession Card.
The new Child Concession Card can be used immediately



CHILD CONCESSION CARD

Documents required:

- Proof of child's identity
- Singapore Citizen and Permanent Resident: original birth certificate
- Non-Singapore Citizen: original passport
- Representative's original NRIC/passport (if submitting on child's behalf)

Application fee: Free



Transiting to Primary One

What are the tasks that my child should be able to do independently?

- Personal hygiene eg. going to the toilet, hand washing, tying shoe laces, buttoning his/her shirt/blouse
- Look out for traffic
- Organising school bag
- Counting money and receiving change
- Asking for permission





What is it like in school?

Subjects taken at Primary One



All P1 students offer:

- | | |
|---------------------------|--|
| 1. English Language | 6. Music |
| 2. Mother Tongue Language | 7. Physical Education |
| 3. Mathematics | 8. Health Education |
| 4. Social Studies | 9. PAL (Programme for Active Learning) |
| 5. Art | |



VENDORS

Our school bus operator, Aik Shen Bus Service and our Student Care Centre provider, ACE Student Care will be available for any query and registration at the School Canteen.

You are strongly encouraged to make online purchases for school books and uniforms from 15 November 2025 onwards. Home delivery is available.



IT TAKES
a village
TO RAISE
a child.

— AFRICAN PROVERB

Every Si Ling Pupil a Scholar who Leads and Serves



Parents to Proceed to Admin Classroom

(2 Respect Classroom)

Orientation Group A Child's Name
ARISHA ZIA BINTE MOHAMAD RASHAD
DAI JINXI
FANG CHENXI
QIU,YETING
YARA AURELIA AHMAD FARKHAN
DONG ANYE
MYAT THUTA HTOO
THUREIN LYNN HTET

Orientation Group B Child's Name
AMANDA HO JIA MIN
BAO XIYUE
HUANG ANZHI
PARK SEIN
ASHOK KUMAR ADHARVA
CHEN ZICHEN
JIA, HUFEI
SHAUN KIM
USMAN ZAYYAN

Every Si Ling Pupil a Scholar who Leads and Serves



Parents to Proceed to Admin Classroom

(LSP Room 1)

Orientation Group C Child's Name
BASARTE ELIA KARA MANANGAN
LEE SZE NGA AMELIA
NGUYEN TRUC ANH
OCO ALIA FAYE YALONG
HUYNH NGOC TRI
NGUYEN BAO MINH
PHILIP TOBIAS VASQUEZ PRASITTHIMET

Orientation Group D Child's Name
HONG XINLE
HONG XINYUE
REBECCA MARSH YUE XI
SHASMEEN AAIRA BINTE AHMAD IBRAHEEM
YUE CHENXI
AI YUHE
ETHAN TANG HENG YU
LIANG, YUCHEN
MUHAMMAD RAYYAN BIN MUHAMMAD HANIF
OWEN LEE YONG SHENG



Order of Movement to Classrooms

Orientation Group B
Orientation Group C
Orientation Group A
Orientation Group D



Order of Movement to Classrooms

Orientation Group B

Orientation Group C

Orientation Group A

Orientation Group D



Order of Movement to Classrooms

Orientation Group B

Orientation Group C

Orientation Group A

Orientation Group D



Order of Movement to Classrooms

Orientation Group B

Orientation Group C

Orientation Group A

Orientation Group D



Feedback Form



SCAN HERE!

Every Si Ling Pupil a Scholar who Leads and Serves



thank you

Every Si Ling Pupil a Scholar who Leads and Serves