



English Language

A Garden where Scholars Bloom



Format of Paper

Item	Component	Marks	Weightage	Duration
Term 1 School-Based Assessment	Paper 1 – Situational Writing & Continuous Writing	55	15%	1 hr 10 min
Term 2 School-Based Assessment	Paper 2 – Language use and comprehension	60	15%	1 hr
Prelim Examinations & PSLE				
Paper 1	Situational Writing	55	27.5%	1 hr 10 min
	Continuous Writing			
Paper 2	Language use and comprehension	95	47.5%	1 hr 50 min
Paper 3	Listening Comprehension	20	10%	~35 min
Paper 4	Reading and Stimulus-Based Conversation	30	15%	5 min – preparation time 5 min – examination time



Level Programme

- Piloting **STELLAR 2.0** Curriculum – **6 Units**
- English Language **Monthly Odyssey (ELMO)**
- Extensive Reading & Library Period
- Library Activities and Quizzes
- Component Practices – Listening, Writing, Oral, Grammar & Synthesis
- Supplementary Lessons – *1 hour/week*
- Additional Support for selected students – *1 hour/week (Term 3)*
- Public Speaking – Post-PSLE activity

A Garden where Scholars Bloom



Strategies

(A) Situational Writing

- Formal & Informal Register

(B) Continuous Writing

- Keep to the **theme**, use **at least one of the picture** given
- Use **vivid description & figurative language**
- Sharpen story starters & story endings e.g. flashback, cliffhanger, etc
- Check mechanics of writing –spelling, punctuation & grammar

(C) Reading & comprehension

- Annotation of narrative and information text
- Comprehension answering techniques – **C.U.B.** - **C**ircle, **U**nderline & **B**rainstorm, summarise key points, T/F Qns – support with valid reasons/evidence from text

(D) Oral – Stimulus-based Conversation

- **T.R.E.E.S.**- **T**houghts, **R**easons, **E**xplanation, **E**xample, **S**uggestion

A decorative border at the bottom of the slide features a lush green field with various flowers, including daisies and small blue and yellow blossoms. Several colorful butterflies in shades of orange, yellow, and blue are scattered across the scene, some appearing to fly.

A Garden where Scholars Bloom



Mother Tongue Languages

A Garden where Scholars Bloom



Format of Paper (Standard MT)

Paper	Assessment Components	Marks	Weightage
Paper 1	Composition	40	20%
Paper 2	Language Paper	90	45%
Paper 3	Listening Comprehension	20	10%
	Oral	50	25%

A Garden where Scholars Bloom



Format of Paper (for Higher MT)

Paper	Assessment Components	Marks	Weightage
Paper 1	Composition	40	40%
Paper 2	Language Paper	60	60%

A Garden where Scholars Bloom



Level Programme

- MT Fortnight (in Term 2)

CL	ML	TL
Painting of sculptures	Dikir Barat (cultural activity)	Language Games

- Language competitions (throughout the year)
- Additional reading resources (newspaper / magazine subscription)

A Garden where Scholars Bloom



Strategies

- Annotation for Reading Comprehension
- POSE (Point, Opinion, Suggestions, Emotions), PEEL (Point, Evidence, Explain, Link) & 5W1H for Oral
- FAST (Feelings & facial expressions, Actions, Speech, Thoughts) for Composition

A decorative border at the bottom of the slide features a lush green field of grass with several white daisies and colorful butterflies in shades of orange, yellow, and blue.

A Garden where Scholars Bloom



Mathematics

A Garden where Scholars Bloom

Format of Paper

Paper	Booklet	Item Type	No. of questions	No. of marks per question	Weighting	Duration
1	A	Multiple Choice	10	1	10%	1h
			5	2	10%	
	B	Short Answer	5	1	5%	
			10	2	20%	

Break

2	Short Answer	5	2	10%	1 h 30 min
	Structured / Long Answer	12	3,4,5	45%	
Total		47	-	100%	2 h 30 min

A Garden where Scholars Bloom



Additional Resources Used

- A Problem A Day Worksheet (For selected classes)
- Mathematics Journal (For selected classes)
- Visible Thinking Book
- Heuristics Worksheet
- Mental Math

P6 Math Programme

- Fortnightly Math Quiz
- Math Fun Week

A Garden where Scholars Bloom



Focus

To strengthen the following basic skills

- Four operations of whole numbers, fractions and decimals.
- Conversion e.g. kilograms to grams; fractions to percentage; decimals to fractions
- Math facts e.g. multiplication table

Students who can cope with basic questions, they will be stretched further

Heuristic skills e.g. identifying a pattern

Problem solving strategies e.g. model drawing

Spatial Visualisation e.g. drawing of figures

Reasoning and communication skills e.g. Journal writing

A Garden where Scholars Bloom

A decorative border at the bottom of the page features a lush green field of grass with several white daisies and colorful butterflies in shades of orange, yellow, and blue.



Science

A decorative border at the bottom of the page features a lush green lawn with various flowers, including white daisies and small blue and yellow blossoms. Several colorful butterflies in shades of orange, yellow, and blue are scattered across the scene, appearing to fly over the garden.

A Garden where Scholars Bloom



Teaching and Learning of Science

- These are the **3 areas** to master:

Knowledge (Content)

Students need to know and understand:

- (a) Scientific facts, concepts and principles
- (b) Scientific terminology and conventions
- (c) Scientific instruments and apparatus

Process Skills

Students need to know how to:

- (a) Interpret information (including pictorial, tabular and graphical)
- (b) Investigate using one or a combination of process skills

Application of Knowledge and Process Skills

Students need to apply scientific facts, concepts and principles to new situations.



A Garden where Scholars Bloom



Format of Paper

- The mastery of the **3 areas** can be demonstrated in:
 - One written paper comprising two booklets:
Booklets A and Booklet B

Format of Paper (Standard)

Booklet	Duration	Item Type	No. of questions	Marks per question	Marks
A	1h 45mins	Multiple-choice	28	2	56
B		Open-ended	12 – 13	2 – 5	44

A Garden where Scholars Bloom



Student Learning Experiences

How do we provide the best learning experience for our students to master the **three areas**?

Engage students

- Hands-on investigation to explore concepts (Inquiry Based Learning)

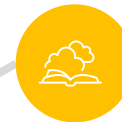


Provide opportunities for Practice, Review and Revision

- Wrap-up and sense-making packages:
 - Science Process Skills
 - MCQ Companion
 - Concept Mastery/School-Based Assessment
- Supplementary / Additional support



Use strategies to support student learning



- **SLPS** to answer science questions:
Sudy question, Link to concepts, Plan answer, Study answer
- **CER** to construct explanation: **C**laim, **E**vidence, **R**easoning
- **#Concepts** to support students in retrieving concepts



Thank You

A decorative border at the bottom of the page features a lush green lawn with various flowers, including white daisies and small blue and yellow blossoms. Several colorful butterflies in shades of orange, yellow, and blue are scattered across the scene, appearing to fly over the garden.

A Garden where Scholars Bloom