



# WELCOME TO SI LING PRIMARY SCHOOL

## PRIMARY 1 ORIENTATION

**A Garden where Scholars Bloom**



# PROGRAMME OUTLINE

Time	Programme
10.00 a.m.	Welcome
10.05 a.m.	Principal's Address
10.15 a.m.	Briefing on Admin Matters by YH
10.50 a.m.	Q&A Session
11.00 a.m.	Proceed to Classrooms
11.30 p.m.	End of Programme



**A Garden where Scholars Bloom**



# SCHOOL LEADERS

**A Garden where Scholars Bloom**



PRINCIPAL

MR KOE EE TIONG

**A Garden where Scholars Bloom**



VICE PRINCIPAL (ACADEMIC)

MDM NURAZIAN BAJURI

**A Garden where Scholars Bloom**



VICE PRINCIPAL (ACADEMIC)  
MR RAJ KUMAR

**A Garden where Scholars Bloom**



# STAFF JOINING US THIS MORNING

**A Garden where Scholars Bloom**



YEAR HEAD (P1 & 2)

MR SETHU RAJAGOPAL

**A Garden where Scholars Bloom**





SENIOR TEACHER  
(LEARNING NEEDS)

**MDM HAFIZAH**

**A Garden where Scholars Bloom**



# P1 FORM TEACHERS

**A Garden where Scholars Bloom**



MDM HAFIZAH



MS CHER WEI SHAN

**1 SOLIDARITY**

**A Garden where Scholars Bloom**



MRS MAY NEO

MDM FADLINAH

**1 PERSEVERANCE**

**A Garden where Scholars Bloom**



MDM RUTH YAAP

MDM FARADILAH

1 INNOVATION

**A Garden where Scholars Bloom**



MS TITANIA LIM



MS AWITE SHI

1 RESPECT

**A Garden where Scholars Bloom**



LEARNING SUPPORT ENGLISH  
**MDM JOSEPHINE LOH**

**A Garden where Scholars Bloom**



MRS JANET TENG



MDM HAZLINE B

LEARNING SUPPORT MATHEMATICS

**A Garden where Scholars Bloom**





# MOTHER TONGUE TEACHERS



**Mdm Chew Suet San**  
Chinese Language  
Teacher



**Mdm Lin Yuping**  
Chinese Language  
Teacher



**Miss Aw Jie Shi**  
Chinese Language  
Teacher



**Mdm Siti Nur Atiqah**  
Malay Language Teacher



**Mdm Faradilah**  
Malay Language Teacher



**Mdm Jayanthi S**  
Tamil Language Teacher

**A Garden where Scholars Bloom**



# PRINCIPAL'S WELCOME ADDRESS

MR KOE EE TIONG

A decorative border at the bottom of the page features a green grassy field with various colorful flowers (yellow, blue, white) and several butterflies in shades of orange, yellow, and blue.

**A Garden where Scholars Bloom**



# Parental Presence is Key



**A Garden where Scholars Bloom**

# PARTNERSHIP WITH PARENTS



**A Garden where Scholars Blo**



# Parental Presence is Key

It means that

- you are aware of your child's learning progress in **school** and at **home**
- you **work closely with the teachers** to maximize your child's potential

A decorative border at the bottom of the slide features a field of green grass with small yellow and blue flowers. Several colorful butterflies in shades of orange, yellow, and blue are scattered across the scene.

**A Garden where Scholars Bloom**



# Parental Presence is Key

## Our Communication Channels

- MOE Parent's Gateway (PG)
- Student Handbook
- Termly Letters with School Calendar
- SLPS Facebook and Instagram

**A Garden where Scholars Bloom**



# Parental Presence is Key

SLPS Parent Support Group



**A Garden where Scholars Bloom**



# Be a Parent Volunteer @ SLPS







# Our Approach

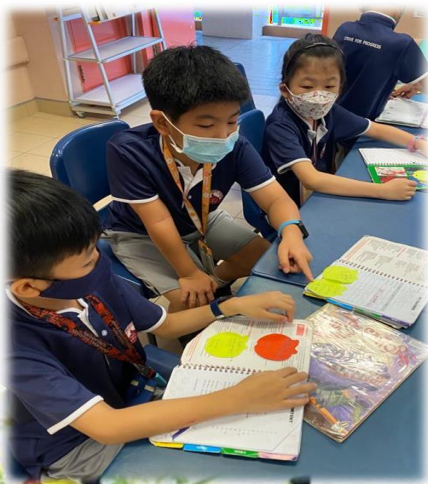
## Academic

- Stretch & Focused Remediation
- Small-Group teaching
- Mass Lecture
- Writing/Oral Practices
- Revision Exercises
- Enrichment Programme



## Well-being and Motivation

- P5-P1 Buddy Programme
- Level Meeting
- Birthday celebrations
- Inter-class games
- Class excursions
- Recognition for efforts
- Breakfast with Principal



**A Garden where Scholars Bloom**



*To Nurture Every Child to his Best*





# BRIEFING BY YEAR HEAD

MR SETHU RAJAGOPAL,  
YEAR HEAD PRIMARY 1 & 2

A decorative border at the bottom of the page features a row of green grass, small white and yellow flowers, and several colorful butterflies in shades of orange, yellow, and blue.

**A Garden where Scholars Bloom**



# A DAY IN PRIMARY ONE

**A Garden where Scholars Bloom**



Si Ling Primary School



# PROGRAMME FIRST THREE DAYS

**A Garden where Scholars Bloom**



# FIRST DAY OF SCHOOL

- Have a good breakfast
- Arrive in school by 7.25 a.m.
- Assemble in the school hall and sit according to the class label

**Note: P1 Parents are allowed into the school premises only on the 1<sup>st</sup> day of school.**

A decorative border at the bottom of the page features a field of green grass with various colorful flowers (yellow, blue, white) and several butterflies in shades of orange, yellow, and blue.

**A Garden where Scholars Bloom**



# FIRST DAY OF SCHOOL

## ENGAGEMENT WITH PARENTS 2 JANUARY 2024

- Principal's Address
- Transition Talk
- P1 Recess from **9 a.m. to 9.30 a.m.\***
- Only on the 1<sup>st</sup> day of school

**A Garden where Scholars Bloom**





# DAY ONE

- **Classroom Circle Time**
  - Getting To Know Your Form Teachers and Classmates
- **School Tour**
- **Apple Storytime**



**A Garden where Scholars Bloom**



# DAY TWO

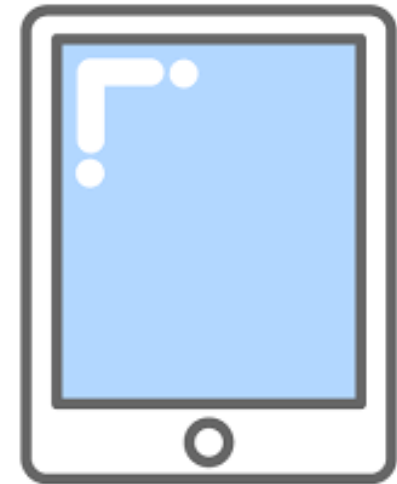
- **Classroom Circle Time**
  - Setting Class Rules
- **Express Yourself!**
  - Puppetry
  - Drawing About Myself
  - Sing and Dance





# DAY THREE

- **Classroom Circle Time**
  - Road Safety
- **Ice Breaker Games**
- **ICT Experience**



**A Garden where Scholars Bloom**



# PREPARING FOR SCHOOL

## What to wear

1. School uniform
2. Black school shoes
3. White school socks
4. Name tag must be ironed onto the uniform, above the school logo.



**A Garden where Scholars Bloom**



# PREPARING FOR SCHOOL

## What to Pack Everyday:

1. Pencil case
2. Colour pencils
3. Student Handbook\*
4. File for Letters / Homework
5. Water bottle
6. Pocket Money
7. Storybook
8. Snacks



**\* Student Handbook will be issued by Week 1**

**A Garden where Scholars Bloom**



# FIRST DAY OF SCHOOL (2 JAN 2024)

- **Do not bring school bag**
- Bring a small bag for:
  - pencil case
  - colour pencils
  - wallet / food for recess
  - snacks for Snack Time
  - storybook



**A Garden where Scholars Bloom**



# FIRST WEEK OF SCHOOL (DAY 2 ONWARDS)

- Bring only the stipulated books for each day
- Write the name and class of your child on all books and materials
- Teachers will collect these materials and place them in the classroom
- Bring a story book for silent reading before flag-raising ceremony

**A Garden where Scholars Bloom**



# DAY 2 OF SCHOOL (3 JAN 2024)

## What to Pack:

Mathematics Books

1. Primary Mathematics Textbook 1A
2. Primary Mathematics Practice Book 1A
3. 1 Medium Square Exercise Book (for Maths Mental Sums)
4. 5-part Blue Divider File

A decorative border at the bottom of the page features a green grassy field with various colorful flowers (yellow, blue, white) and several butterflies in shades of orange, yellow, and blue.

**A Garden where Scholars Bloom**





# DAY 3 OF SCHOOL (4 JAN 2024)

## CHINESE LANGUAGE

- Chinese Language Activity Book 1 A
- Chinese Language Writing Book 1 A
- 好品德 好公民 — Character and Citizenship Education Textbook & Activity Book 1
- 1 Broad Square Exercise book – Chinese Language
- 字宝宝 Flash Card 1A (Small)
- One Purple Plastic File

**A Garden where Scholars Bloom**



# DAY 4 OF SCHOOL (5 JAN 2024)

## MALAY LANGUAGE

- MLPS (CEKAP) Buku Activiti 1A
- Rakyat Budiman Character and Citizenship Education Activity Book 1
- 1 Jotter book

**A Garden where Scholars Bloom**



# DAY 4 OF SCHOOL (5 JAN 2024)

## TAMIL LANGUAGE

- Tamil Language Workbook 1A
- Theen Thamizh Penmanship Book 1A
- **பண்புள்ள குடிமக்கள்** Character and Citizenship Education Activity Book 1
- 1 Broad Line Exercise book
- 1 Jotter book

**A Garden where Scholars Bloom**



# DAY 5 OF SCHOOL (8 JAN 2024)

## ENGLISH LANGUAGE

- STELLAR Handwriting Book
- P1 Reading Comprehension Booklet 2
- P1 Language Usage Booklets 1-4
- 1 Broad Line Exercise book (Spelling)
- 1 Jotter book (Writing)
- My Word Bank Book

**A Garden where Scholars Bloom**



# DAY 5 OF SCHOOL (8 JAN 2024)

## OTHER SUBJECTS:

- Inquiring Into Our World Activity Book (Social Studies)
- FTGP Book
- A4 Sketch Book
- Music Book
- Pupil's Portfolio File

**A Garden where Scholars Bloom**



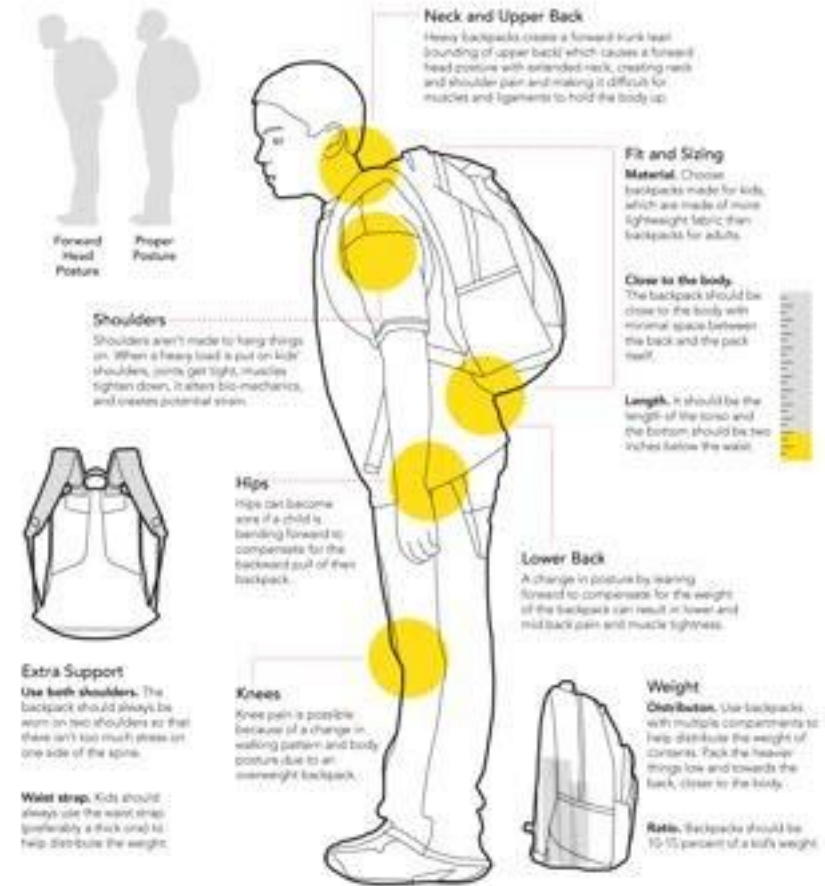
# PREPARING FOR SCHOOL

## Backpack

- Keep it light
- Critical strain on joints(permanent)
- Regularly pack their bags for the next day

### What Heavy Backpacks Are Doing To Kids' Bodies

About 5,000 children visit emergency rooms each year because of backpack-related injuries, and at least 14,000 kids are treated for them. While not every kid will go to the hospital because of heavy backpacks, overweight loads can cause neck, back and shoulder pain and more. Below, see what is so dangerous about kids carrying heavy backpacks — and what parents can do about it.



Source: Dr. Rob Dumas, an orthopedic health physician, U.S. Consumer Product Safety Commission, American Academy of Orthopedic Surgeons, Eric C. Yessierli, Board Certified Pediatric Chiropractor

**A Garden where Scholars Bloom**



# SCHOOL TERM

- New school term: 2 January 2024, Tuesday
- 4 terms in a year: Termly School Calendar will be shared via Parents Gateway
- All students must attend school until the end of each school term.

**A Garden where Scholars Bloom**



# SCHOOL HOURS

School Days	Reporting Time	Recess Time	Dismissal Time
Mondays to Fridays	7.25 a.m.*	9.00 to 9.30 a.m.	1.30 p.m.

\* Students report to Hall (Mon)/Classrooms by 7.25 a.m.

\* Silent reading starts from 7.10 a.m.

**A Garden where Scholars Bloom**



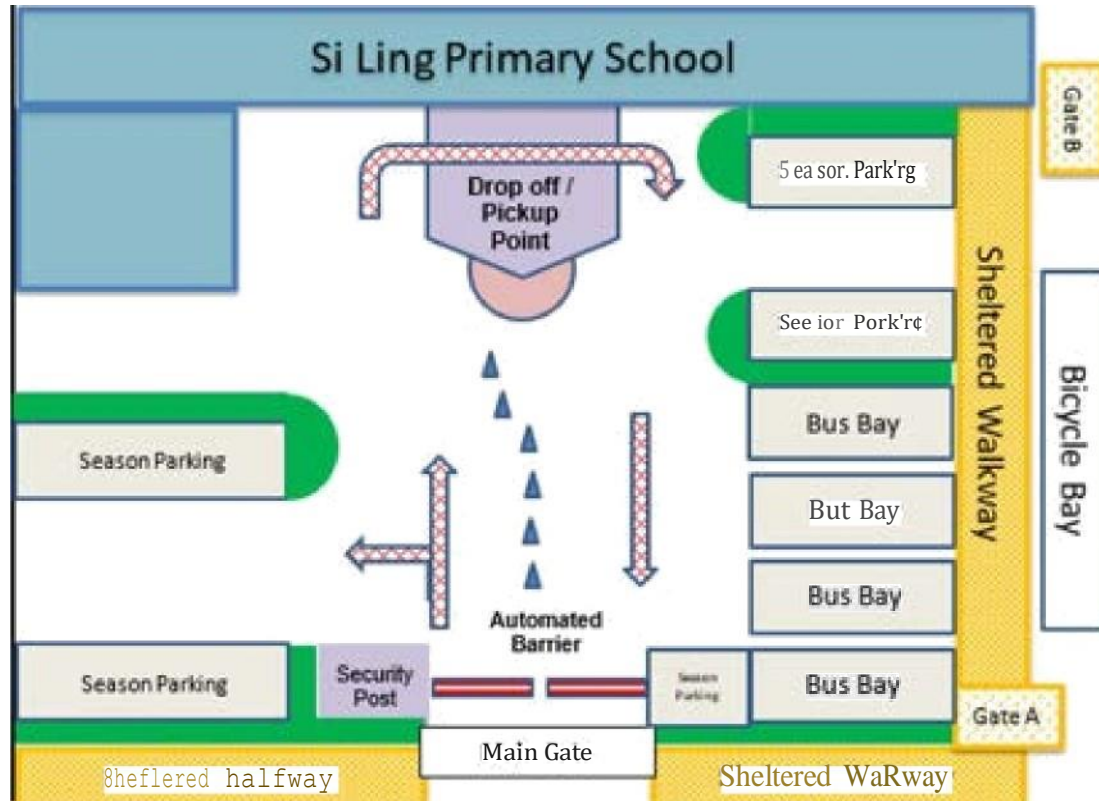


# ARRIVAL AND DISMISSAL ARRANGEMENTS

**A Garden where Scholars Bloom**



# ARRIVAL ARRANGEMENT



Woodlands Avenue 1

**A Garden where Scholars Bloom**



## Main Gate (For Vehicles only)

6.00 a.m. to 6.00 p.m.



**A Garden where Scholars Bloom**



## Gate A (Behind Bus Stop)

6.00 a.m. to 6.30 p.m.

1.20 p.m. to 2.00 p.m.

INTERCOM



**A Garden where Scholars Bloom**



## Gate B (Blk 371A)

6.00 to 7.30 a.m.

1.20 to 1.40 p.m.



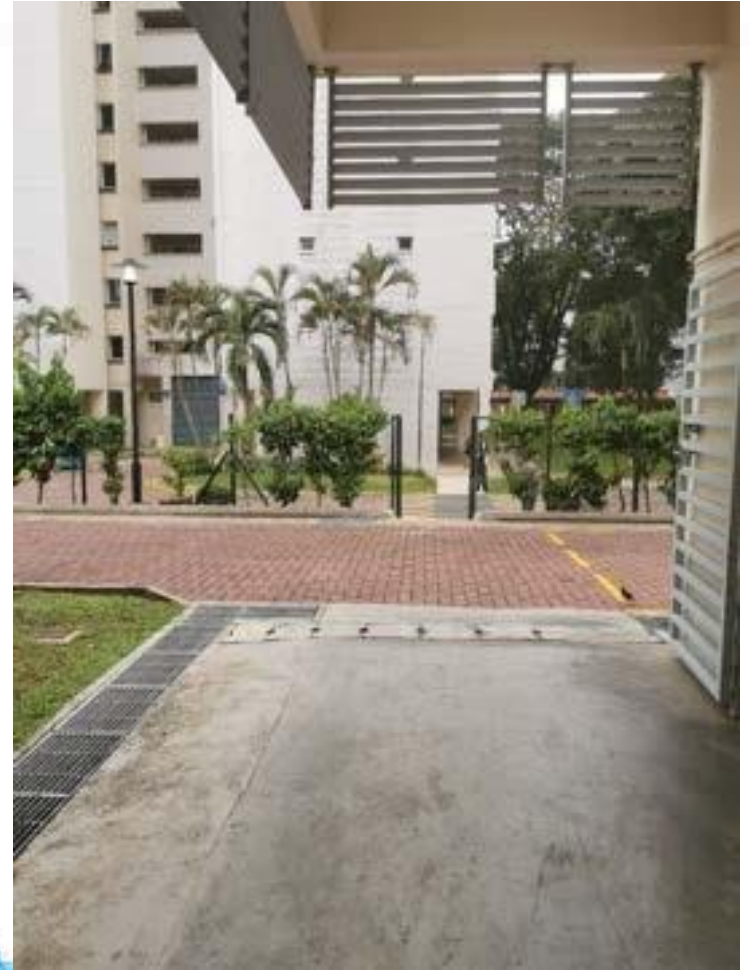
**A Garden where Scholars Bloom**



## Gate C (Blk 353)

6.00 to 7.30 a.m.

1.20 to 1.40 p.m.



**A Garden where Scholars Bloom**



# DISMISSAL ARRANGEMENT

## Pick up by family members / caregivers

- All P1 students will be dismissed class by class.
- Teachers will bring students to Gate A, B and C.
- Parents are to wait outside the gates.  
Please make way for the students to be dismissed.



# DISMISSAL AT BLOCK 371



**A Garden where Scholars Bloom**





# DISMISSAL AT BLOCK 371



**A Garden where Scholars Bloom**



# DISMISSAL ARRANGEMENT

## School Bus



- Teachers will bring students to the bus queues.
- Students will join the bus queues according to their bus numbers.

**A Garden where Scholars Bloom**



# SEATBELT RULES

- Ensure the safety of school children. The safety of children is a **shared responsibility**.
- Children need to cooperate with the school bus drivers.
- **Prepare your child mentally and train your child to belt up for safety at all times.**





# DISMISSAL ARRANGEMENT

## Meet up with Elder Siblings



- Siblings meet each other at the designated Sibling's Waiting Area near the General Office.
- Siblings will leave the school according to the dismissal mode of the elder sibling.



# SIBLINGS' WAITING AREA



**A Garden where Scholars Bloom**



# DISMISSAL ARRANGEMENT

## Student Care

- Students will be picked up by the Student Care Teachers within the school compound (either outside the School Hall or near the Bookshop)



**A Garden where Scholars Bloom**



# BUDDY SYSTEM

- P5 buddies will assist the P1 students on the first week during recess.
- P5 buddies will:
  - guide the P1 students to queue at the food stalls
  - remind P1 students to collect their change
  - teach P1 students to bring their food to the tables safely
  - teach P1 students to return utensils to the receptacles

**A Garden where Scholars Bloom**



**A Garden where Scholars Bloom**





# BUDDY SYSTEM



**A Garden where Scholars Bloom**



# SCHOOL CANTEEN

- Pocket money of about **\$2** each day
- **Variety of food items sold:**
  - Chinese food
  - Western food
  - Halal food
  - Fresh fruit juice and cut fruits
  - Hot drinks and snacks



**A Garden where Scholars Bloom**



<i>Menu</i>	
<b>Staff 2: Fusion snacks</b>	
Type of Food	Price
Pancake*	\$0.80
Waffle*	\$1.00
*Choice of filling : banana / cheese / chocolate spread / strawberry jam	
Muffin	\$1.00
Roti / Idli (1 piece with curry)	\$1.00
Pastry puff (Potato or Apple)	\$1.00
Takoyaki chicken (3 pieces)	\$0.90
Oriental fried rice (only on Mon and Wed)	\$1.00 (small) \$1.50 (big)
Chicken Porridge (only on Wed and Fri)	\$1.20
Baked macaroni cheese (only on Tue and Thu)	\$1.60 (small) \$2.00 (big)
Cereal (cornflakes/coco crunch) with milk	\$1.00
<b>Sides</b>	
Scrambled egg / Sunny side up egg / Hard-boiled egg	\$0.50
Potato wedges / Bagedil	\$1.00
Chicken patty	
Fishball (3 pieces)	

**Operating Hours: 6.30am to 2.00pm**

**A Garden where Scholars Bloom**



Stall 1

# Thirst Quenchers



NETS )))



# SNACK BREAK

- 10 mins snack time at 12 p.m.
- Prepare a simple healthy dry snack eg. bread, fruits, biscuits
- No sweet drinks and unhealthy snacks allowed
- Try out “Snack Time” at home!



**A Garden where Scholars Bloom**



# GENERAL INFORMATION

## Visitors to School

- For the safety and security of our students, all visitors are required to sign into the log book at the guard post before proceeding to the General Office.
- Visitors are required to display “Visitor” pass at all times.
- Visitors are not allowed to loiter in the school or go directly to the classrooms.

**A Garden where Scholars Bloom**



# GENERAL INFORMATION

- For students who are unwell, parents are required to come to school to bring them home.
- Parents must acknowledge in the 'Permission to Leave School Early Form' in the General Office.
- All parents are required to update the school whenever there is a change in dismissal mode, address or contact numbers.

**A Garden where Scholars Bloom**





# FINANCIAL ASSISTANCE SCHEME (FAS)

- Available for Singapore Citizens only.
- You may approach the staff at the General Office if you need assistance
- Forms for MOE FAS can also be obtained from MOE Website.

**A Garden where Scholars Bloom**



**CHILD CONCESSION CARD**

**A Garden where Scholars Bloom**



# Child Concession Card

The Child Concession Card is a stored value travel card that enables children to travel for free on public transport, except on Premium Bus Services and NightRider services.

A child is eligible to apply for a Child Concession Card if he/she is 0.9m and above in height, below seven years old.

The Child Concession Card can also be used to purchase food and drinks from the canteen however parents need to top-up the card at any SimplyGo Ticket Office before they can use for the purchase.

\*\*Do note that this card is required for all students under the MOE Financial Assistance Scheme (MOE FAS).

**A Garden where Scholars Bloom**



## How to Apply

Please apply for the Child Concession Card at any SimplyGo Ticket Office.



The card will be encoded with the child's name, birth certificate/passport number, date of birth and card expiry date.

Each eligible child is entitled to one Child Concession Card.

The new Child Concession Card can be used immediately and no activation is required.

Documents required:

- Proof of child's identity
- Singapore Citizen and Permanent Resident: original birth certificate
- Non-Singapore Citizen: original passport
- Representative's original NRIC/passport (if submitting on child's behalf)

Application fee: Free

**A Garden where Scholars Bloom**



# TRANSITING TO PRIMARY 1

## What are the tasks that my child should be able to do independently?

- Personal hygiene eg. going to the toilet, hand washing, tying shoe laces, buttoning his/her shirt/blouse
- Look out for traffic
- Organising school bag
- Counting money and receiving change
- Asking for permission



# WHAT IS IT LIKE IN SCHOOL?

## Subjects taken at Primary One

All P1 students offer:

1. English Language
2. Mother Tongue Language
3. Mathematics
4. Social Studies
5. Art
6. Music
7. Physical Education
8. Health Education
9. Programme for Active Learning





## VENDORS

Our school bus operator, Aik Shen Bus Service and our Student Care Centre provider, ACE Student Care will be available for any query and registration at the **School Canteen**.

You are strongly encouraged to make online purchase for school books and uniforms from **10 November 2023** onwards. Home delivery is available.



## First Day of School

**2 Jan 2024, Tuesday**

Time: 7.45 a.m. to 9.00 a.m.

- Welcome by Principal
- Talk on Supporting Children In Their Transition To P1 by ST Learning Needs
- Recess

A decorative border at the bottom of the page features a green grassy field with several colorful butterflies in shades of orange, yellow, and blue.

**A Garden where Scholars Bloom**





It takes a  
village to  
raise a child....



**A Garden where Scholars Bloom**



# Thank You

**A Garden where Scholars Bloom**



# FEEDBACK FORM

**A Garden where Scholars Bloom**



**SCAN ME**



**A Garden where Scholars Bloom**



MDM HAFIZAH

1 SOLIDARITY

**A Garden where Scholars Bloom**



MRS MAY NEO

**1 PERSEVERANCE**

**A Garden where Scholars Bloom**



MS JULIANA LIM

1 INNOVATION

**A Garden where Scholars Bloom**



MDM RUTH YAAP

**1 RESPECT**

**A Garden where Scholars Bloom**